

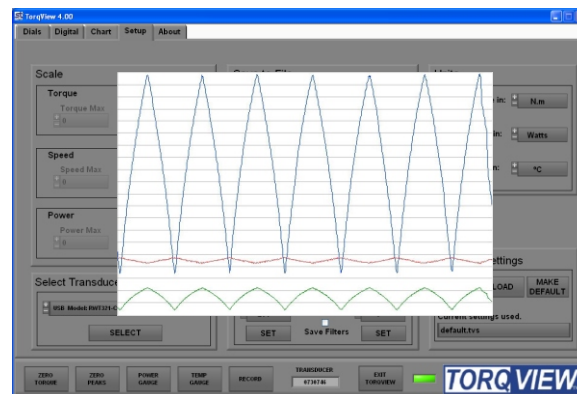
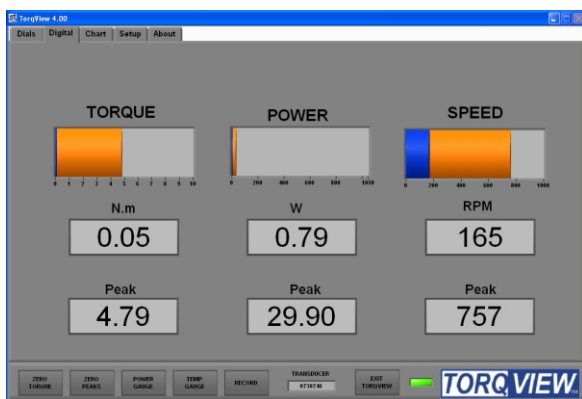
Advanced Torque Monitoring PC Interface Software



Advanced Torque Monitoring PC Interface Software

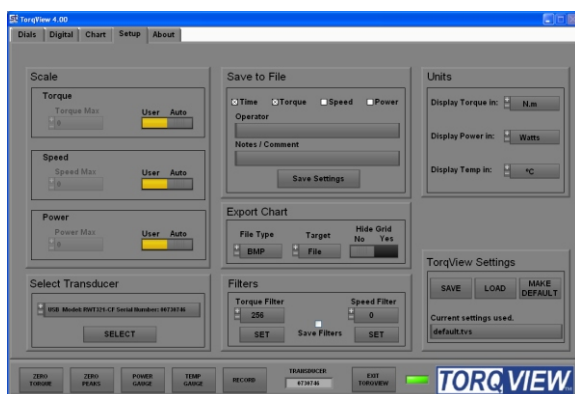
TORQVIEW is an easy to use advanced torque monitoring software available to operate in conjunction with the SGR520, SGR540, RWT420, RWT440, RWT460 and ORT240 Series Transducers to provide a flexible display, real time plotting and data recording facility.

TORQVIEW has been written using National Instruments LabVIEW, and as it is a self running executable file so LabVIEW is not required to run this software.



Hardware requirements (Recommended)

Sensor Technology recommends a PC running Windows 11/10 64 bit with a minimum of 2GB of RAM; a minimum screen resolution of 1024 x 768 pixels; and a minimum of 650MB free disk space



Benefits

- Simple installation using serial port or USB.
- Ease of operation (user friendly, a variety of user interface settings such as scales, units, etc.)
- 3 types of display: dials, digital bars and chart graph.
- Wide choice of displayed units (SI, FPS and MKS)
- Displays torque, RPM, power and temperature. Output a text file compatible with Matlab, Excel.
- LabView VIs available for users to design their own Interfaces
- DLLs available for users to write their own custom software process control applications.
- Data recording facility.
- User configurable settings