

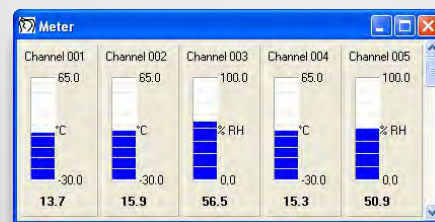
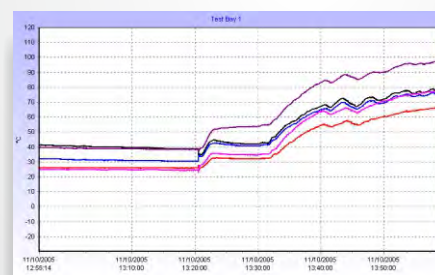
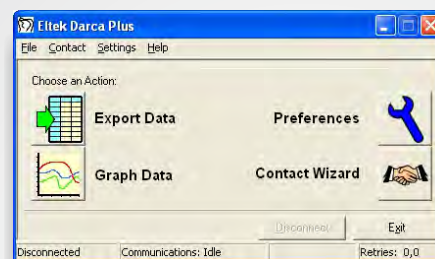
## Downloading and Remote Control Application for Eltek dataloggers

*Darca provides powerful but simple-to-use tools for configuring and metering Squirrel channels, changing Squirrel settings, downloading data and analysing it either graphically or statistically. Connection to the Squirrel can be made by a direct serial link, through a modem (standard or GSM), a LAN or via USB.*

*Three versions are available: Darca Lite with standard features, Darca Plus with enhanced features including modem support and graphing and Darca Secure for full data protection.*

## Key Features

- All operational control of the Squirrel may be performed using the PC
- Data can be exported into text format for analysis in a spreadsheet package
- Intelligent storage of Squirrel configuration provides fast connection to the Squirrel
- Squirrel channels may be scaled into appropriate engineering units
- Copy and Paste tools in Channel Setup for simple and fast channel configuration
- Alarm feature warns if any channel inputs are outside 'safe' limits
- Squirrel configuration may be saved as a Setup File and then applied to other Squirrels
- Contact Squirrels on a Squirrel Network
- User-friendly interface for highly intuitive operation
- Multiple windows may be displayed simultaneously to provide total control over Channel Setup and Metering
- Displays all selected channels on screen simultaneously
- Contact Wizard guides you through the stages of contacting the Squirrel
- 'Shed' utility allows scheduled, automated downloading of data from the Squirrel
- Comprehensive help for first time or experienced users
- Transmitter setup for the Gen II Telemetry System



## Darca Lite

- Windows XP / Windows 7 compatible
- Baud rate selectable between 9600 and 115200 baud
- Password protection for tamper-proof operation
- Configurable refresh times of Meter Window and Squirrel status
- Memory Size Calculator optimises download time
- Connection to Squirrel via Serial Port or USB
- Printer output

## Darca Plus

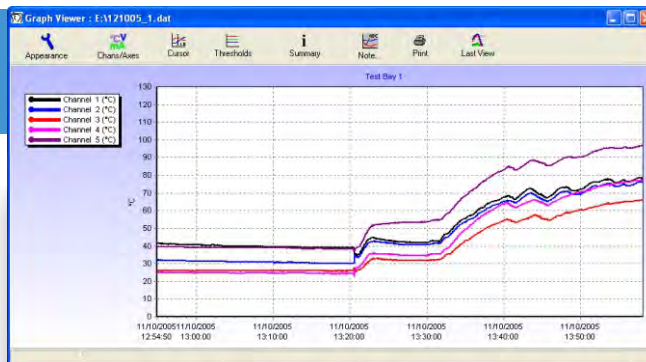
- as Darca Lite
- Connection to Squirrel via GSM or ethernet
- Powerful graphing tools display real-time or historical data
  - 3D plots, line, event and windrose
  - Plot colour and axis configuration can be saved
  - Text comments can be added to points of interest
- Summary window displays data and statistical information
- Configure Gen II transmitters and map transmitters to Squirrel channels

## Darca Plus Graphing Tools and analysis

Summary: E:\121005\_1.dat

Channel	Channel 1	Channel 2	Channel 3	Channel 4
Start Of Data	11/10/2005 12:54:50			
End Of Data	11/10/2005 13:58:08			
Valid Data	3798	3799	3799	3799
Max Value	78.8	76.4	66.4	77.6
Time Of 1st Max	11/10/2005 13:57:38	11/10/2005 13:57:37	11/10/2005 13:58:07	11/10/2005 13:58:05
Min Value	34.2	30.2	25.2	22.6
Time Of 1st Min	11/10/2005 13:20:37	11/10/2005 13:14:44	11/10/2005 13:20:44	11/10/2005 13:20:34
Average	51.952	47.119	38.870	42.577
Sum	197313.000	179006.400	147669.000	161749.800
Std. Deviation	14.724	17.003	14.727	19.459

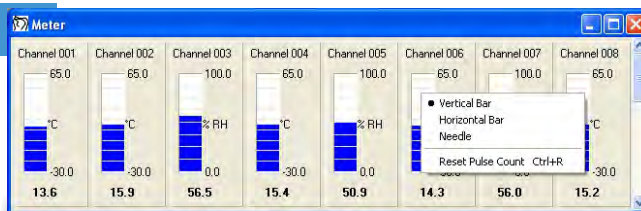
- Summary Window displays stats of current view



- Configure Graph Window: legend, gridlines and 3D orientation
- Cursor control to view raw data of a point on the graph
- Plot channel thresholds
- Powerful zooming tool
- Real Time graphing

## Real Time Metering

- View metered channels as Vertical Bar, Horizontal Bar or Needle
- Intelligent resizing
- Channels in alarm are displayed in red
- Grouping of channels



Squirrel Settings

Time and Date | Intervals | Memory | Advanced | SMS

Squirrel Time: 10:00:39 Squirrel Date: 07/02/2006

Start Time: 09:20:38 Start Date: 07/02/2006

Delay Generator: Days: 0, Hours: 0, Mins: 0

Start Time Rounding: ☒ Do Not Round, ☐ Nearest Minute, ☐ Nearest 1/2 Hour, ☐ Nearest Hour

Reset Delay, Auto Set

OK, Cancel, Help

## Squirrel Settings / Status

- Access Squirrel Settings and view the Squirrel Status
- Delay Generator and Memory Size Calculator tools assist in setting the Start and Stop time
- Squirrel Status refreshed regularly
- Colour coding draws attention to important parameters

Squirrel Status

Log Status: Logging, Interval: Off

Time & Date: Time: 10:01:11, Date: 07/02/2006, Start Time: 10:01:07, Start Date: 07/02/2006

Miscellaneous: Battery: 8.6V, Ext. Supply: 0.0V, Name: K00544-7887, Serial No: K00544-7887, Firmware: 6.2

Memory: Total: 247000, In Use: 247000, Used: 37, Free: 246963, Mode: Hold, Source: Unknown

Intervals: Log: 00:02:00, Sample: 00:00:30

Run Test, Close, Refresh

## Transmitter Setup

Squirrel Channel to Transmitter Channel Assignments

Help, Refresh, Next Transmitter >>, Close Transmitter Connections

Transmitter: Tx-1627

Sensor-On time (s): 0, Set Sensor On Time

Tx Interval: 00:00:20, Set Tx Interval

Total transmitter channels: 2, Used transmitter Channels: 2, Free transmitter Channels: 0, Battery Level (%): 95

Delete All Tx Channels, Set/Delete Selected Tx Channels, Auto Set (All Channels + Interval)

Channel: Current Squirrel Start Channel: 1

Tx Chan:	Range:	Sq Chan:	Match:	Alarms:
A	Sensation Temperature (-30.0 to 65.0 °C)	10	<input checked="" type="checkbox"/>	<input checked="" type="checkbox"/>
B	Sensation Humidity (0.0 to 100.0 % RH)	11	<input checked="" type="checkbox"/>	<input checked="" type="checkbox"/>

Set Channel, Delete Channel, Meter, Calibrate

- Map transmitters to Squirrel channels
- Configure transmitter settings
- Meter transmitter inputs
- Calibrate humidity sensors



Whilst every effort has been made to ensure the accuracy of this specification, we cannot accept responsibility for damage, injury, loss or expense from errors or omissions. In the interest of technical improvement, this specification may be altered without notice.

For pricing or any further information, please contact Omni Instruments Ltd.