

ToughSonic® 50 Level & Distance Sensor

Windows PC Setup, Waterproof, Multiple Outputs

TSPC sensors and SenixVIEW software put the power of ultrasonics in your hands. Quickly adjust, optimize, save and clone your setups without calibration!

These sensors are housed in a single small potted enclosure for environmental durability and long life. They mount at a distance from a liquid or solid material and measure distance to the surface. Sensor outputs respond to that measured distance.

Applications exist in many industries, and include pump control, bulk inventory, high/low level alarms, river level for flood detection and much more.

Non-Contact Ultrasonic Distance & Level Measurement

Features

Distance Measurements

- Long range, short dead band
- Continuous and point level
- Water or non-caustic materials
- Adjustable by computer (PC) software, locally or remotely
- Narrow beam with adjustments to optimize performance

Packaging & Performance

- Survives submersion
- Temperature compensation for improved accuracy
- Short & overload protected I/O
- Adjustable sensitivity
- Rear status indicators (3)

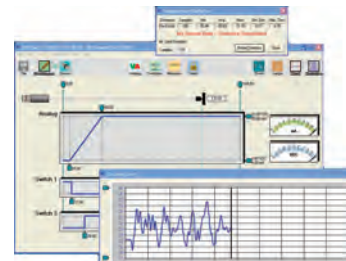
Free Functionality using adjustable interface features like switch hysteresis and time delays to build complete solutions such as pump or material flow controllers. Save cost by eliminating PLCs, delay circuits and time delay relays!

Up to 50-ft. (15.2 m) maximum range in IP68 rated stainless or PVC housing



PC Setup Power!

Use **SenixVIEW** software (see separate data sheet) to select and adjust all interfaces, timing parameters, filters and modes. Then view, analyze or log data to optimize your application.



Model Options

Three package styles are offered for mounting flexibility. Each sensor has multiple analog and switch outputs plus a serial data interface for PC configuration or other data communication needs.



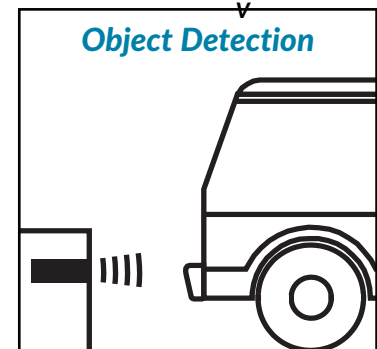
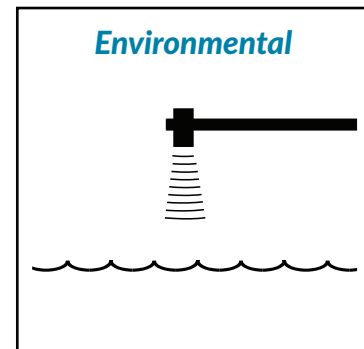
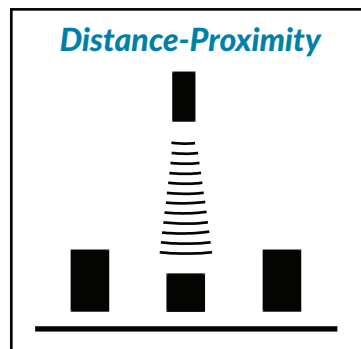
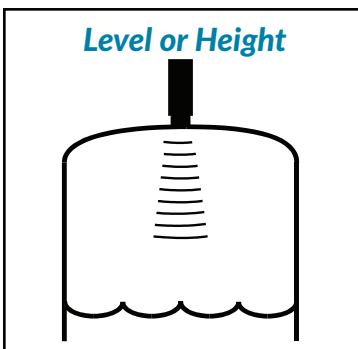
TSPC-21SRM (Stainless)



TSPC-25P (PVC)

Flexible configuration means fewer parts to stock and quick duplication! Application setups can be stored on your PC and later recalled. Using a single inventory part you can quickly clone replacement sensors for any number of applications with re-calibration!

TOUGH SONIC
Tough. Smart.



omni
INSTRUMENTS
Measurement and data acquisition solutions

Contact Details:

Tel: +44 845 9000 601
Fax: +44 845 9000 602
Local Tel: 01382 443000
Email: info@omni.uk.com

Mailing Address:

Suite E, East Kingsway Business Centre,
Mid Craigie Trading Estate, Mid Craigie Road,
Dundee, DD4 7RH, UK

ToughSonic® 50 Level & Distance Sensor

Specifications



Optimum Range	33 ft. (10 m)	Max Range	50 ft. (15.2 m)
Deadband	Typ. < 12 inches (30.3 cm)	Adjustment	SenixVIEW software (included)
Case Material	316 stainless steel or PVC	Configuration	Stored in non-volatile memory
Temperature	-40 to 158 F (-40 to 70 C)	Outputs	Five selectable, plus serial data
Humidity	0 to 100% operating	Transducer	Ruggedized piezoelectric
Compensation	Temperature compensated	Protection	NEMA-4X, NEMA-6P, IP68
Resolution	Digital: 0.0135 in. (0.3438 mm); Analog steps: 4099 (0-10 VDC), 3279 (4-20 mA)/mmA)		
Repeatability	Nominal 0.2% of range @ constant temp. Affected by target, distance, environment		
Update Rate	5 Hz (200 ms), SenixVIEW adjustable; affected by SenixVIEW filter selections		
Voltage Output	0-10, 0-5 VDC or PC customized; 10 mA max. (*)		
Current Loop #1	Current sourcing 4-20 mA or SenixVIEW adjustable, max. loop 450Ω (*)		
Current Loop #2	Current sinking 4-20 mA or SenixVIEW adjustable, max. loop 450Ω (*)		
Sinking Switch	150 mA max. @ 40 VDC max., adjustable set point & polarity, fault indication		
Sourcing Switch	150 mA max. @ input voltage, adjustable set point & polarity, fault indication		
RS-232, RS-485	Modbus protocol, 9600-115200 baud (selectable), 8 data bits, 1 stop, no parity		
SYNC feature	Permits up to 32 sensors to operate in close proximity without interaction		
Target Requirements			
Objects	Detects flat or curved objects. Surface must reflect ultrasound back to sensor.		
Max. Distance	Affected by size, shape, orientation of target (sound level reflected back to sensor), environment Restrict use to Optimum Range when using over a wide range of environmental conditions		
Orientation	Flat surfaces should be oriented perpendicular to sensor output beam		
Optical	Unaffected by target color, transparency, light, or other optical characteristics		

Connections

Cable Connection	Wire	Description
Power	Brown	10-30 VDC @ 70 mA maximum; Typical: 45 mA @ 24 VDC (**)
Ground	Blue	Power and interface common
Voltage Output *	Violet	0-10 VDC, 0-5 VDC or custom end values between 0 and 10 VDC
Current Loop Output *	Green	4-20 mA sourcing (adjustable end values between 4 and 20 mA)
Current Loop Output *	Orange	4-20 mA sinking (adjustable end values between 4 and 20 mA)
Switch #1 Output	Black	Sinking ("NPN") or Sourcing ("PNP"), user selected
Switch #2 Output	White	Sinking ("NPN") or Sourcing ("PNP"), user selected
RS-232 out / RS-485-	Gray	Serial data connection (depends on model - see model selection)
RS-232 in / RS-485+	Yellow	Serial data connection (depends on model - see model selection)

(*) Analog outputs share common distance endpoints. Both 4-20 mA outputs share the same adjustable max / min end values. The max. loop resistance is derated below 15 VDC input voltage.

(**) At default update rate. Output currents not included. Sensitivity reduced below 15 VDC input voltage.

Part Numbers

Model Number	Description
TSPC-21S-232	Clamp mounted, SS, serial RS-232 interface (PC COM port compatible)
TSPC-21S-485	Clamp mounted, SS, serial RS-485 interface (allows multi-sensor networking)
TSPC-21SRM-232	Rear mount threads, 1.5" NPT, Stainless Steel, serial RS-232 interface
TSPC-21SRM-485	Rear mount threads, 1.5" NPT, Stainless Steel, serial RS-485 interface
TSPC-25P-232	Threaded 2.5" NPT front and rear, PVC, serial RS-232 interface
TSPC-25P-485	Threaded 2.5" NPT front and rear, PVC, serial RS-485 interface

Senix also offers interconnection, communication, mounting, and display components

Dimensions

Model	Length x Diameter	Weight
TSPC-21S	4.8 in (122 mm) x 2.312 in (59mm)	29.9 oz (0.82 kg)
TSPC-21SRM	5.9 in (150 mm) x 2.50 in (63 mm)	31.5 oz (0.89 kg)
TSPC-25P	5.0 in (127 mm) x 2.5 in (63.5mm)	29.1 oz (0.82 kg)

All have 6.5 ft (2m) shielded cable attached. Other lengths available

1 Dec 2015 Rev K2

For pricing or any further information, please contact Omni Instruments Ltd.



Contact Details:

Tel: +44 845 9000 601
 Fax: +44 845 9000 602
 Local Tel: 01382 443000
 Email: info@omni.uk.com

Mailing Address:

Suite E, East Kingsway Business Centre,
 Mid Craigie Trading Estate, Mid Craigie Road,
 Dundee, DD4 7RH, UK