

ELECTRICAL OPTIONS/ SPECIFICATIONS

OUTPUT OPTION	OUTPUT	SUPPLY	
A	0.5 TO 4.5V RATIO METRIC	5V	STANDARD
B	±5V	±15V	
C	0.5 TO 9.5V	24V	BUFFERED
D	±10V	±15V	
E	0.5 TO 4.5V	24V	
F	SUPPLY CURRENT 12mA TYP. 20mA MAX.	24V	
G	4 TO 20mA 2-WIRE	24V	
H	4 TO 20mA 3-WIRE SINK	24V	
	4 TO 20mA 3-WIRE SOURCE	24V	

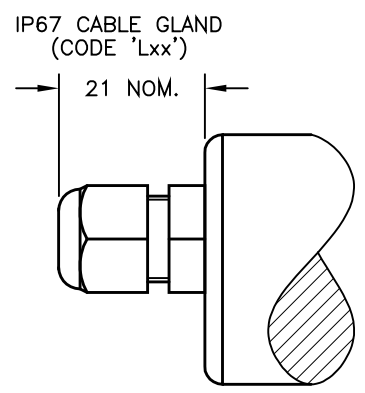
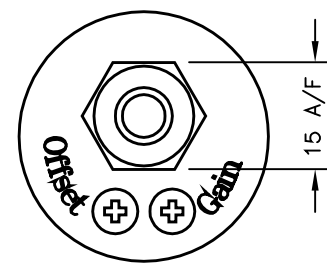
SINK VERSION OUTPUT COMPLIANCE 5-28V
SOURCE VERSION DRIVE 300Ω MAX TO 0V

CABLE LENGTH, OPTIONS 'Lxx' OR 'Mxx', ORDERED IN cm, 50cm STANDARD OR AS REQUIRED.
3-CORE SCREENED: 0.2mm², ø4mm PUR JACKET
4-CORE SCREENED: 0.2mm², ø4.6mm PUR JACKET

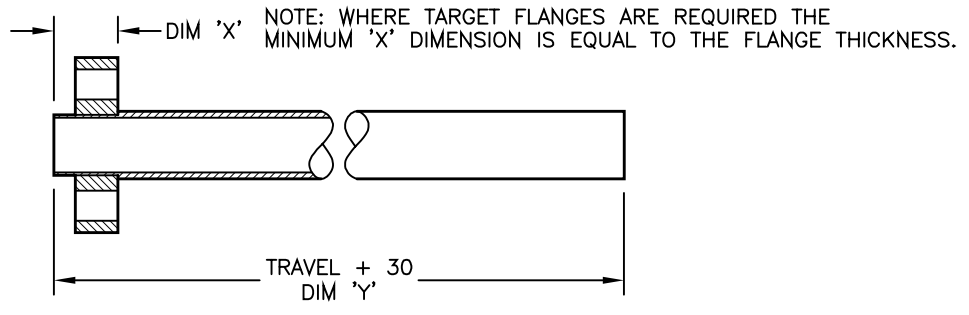
CABLE/CONNECTOR CONNECTIONS*;
3 CORE 4 CORE CONNECTOR

RED	RED	:1	+Ve
BLACK	GREEN	:3	0V
YELLOW	YELLOW	:4	-Ve - OPTIONS: B OR D
WHITE	BLUE	:2	OUTPUT
SCREEN	SCREEN	:4	BODY - OPTIONS: A, C, E-H

*CONNECTORS; MAXIMUM CONDUCTOR CROSS SECTION 0.75mm²
RANGE OF DISPLACEMENT FROM 20mm TO 600mm, IN INCREMENTS OF 1mm.
BODY MATERIAL: STAINLESS STEEL.

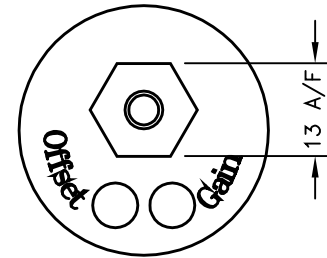


OPTION 'W' FLANGE ILLUSTRATED; SEE TG24-11 FOR DETAILS TO SPECIFY TARGET TUBES.
SEE P100-12 FOR DETAILS TYPICAL TARGET TUBE MOUNTING ARRANGEMENTS

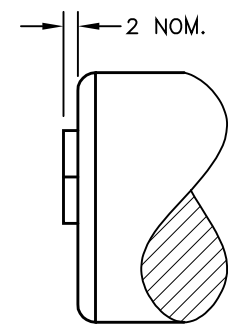


TARGET TUBE:
OPTION 'R' STAINLESS STEEL 316, ID 7.70, OD 9.45.
OPTION 'S' ALUMINIUM ALLOY, ID 7.10, OD 9.53.

GAIN AND OFFSET ADJUSTMENTS SEALED (CODE 'Y')



IP67 SHORT CABLE GLAND - AXIAL (CODE 'Mxx')



J	MOUNTING BOSS DIMS CORRECTED	PDM
K	ELEC. OPTIONS AMENDED.	PDM
L	OPTION 'S' REINSTATED.	PDM
M	ADDITIONAL DIMS/VIEWS ADDED.	PDM

DRAWINGS NOT TO BE CHANGED WITHOUT REFERENCE TO THE CHANGE PROCEDURE.
CHANGES TO PARTS USED IN INTRINSICALLY SAFE PRODUCT MUST BE APPROVED BY THE AUTHORISED PERSON
THIS IS AN UNCONTROLLED PRINT AND WILL NOT BE UPDATED.

J	06/07/05		CHECKED BY	X	±0.4
K	16/10/06		RDS	X.X	±0.2
L	24/09/08			X.XX	±0.1
M	05/07/11	DESCRIPTION			
		P100 LIPS CYLINDER			
		LINEAR POSITION SENSOR			
SCALE	10mm	DRAWING NUMBER		P100-11	REV M
		SHEET		1	OF 1