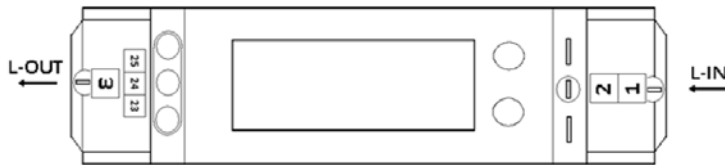
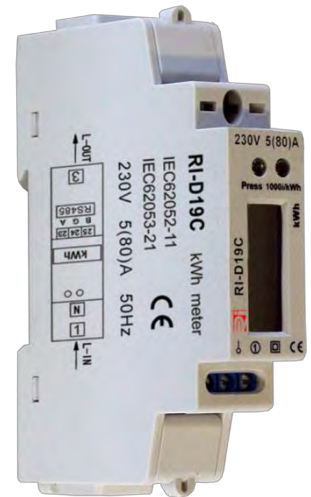


# RI-D19-80-C 230V 5/80A LCD

## Single Phase Energy Meter – 80A Direct With RS485 Output

Current Range	5/80A
Voltage Range	230V ±20%
Impulse Constant (Red LED)	1000 Imp/kWh
Accuracy Class	1
Frequency	50/60 Hz
Display	5+1=99999.9kWh Backlit LCD
Temperature Range	-20°C to 55°C
Max Relative Humidity	75% Average / Short time value 95%
Standards	EN62052-11 / EN62053-21
Power Of Consumption	≤0.4W, 8VA
Communication	RS485 - Modbus
Baudrate	1200, 2400, 4800, 9600 bps
Max Terminal Wire mm <sup>2</sup>	10mm <sup>2</sup>



Connection Diagram

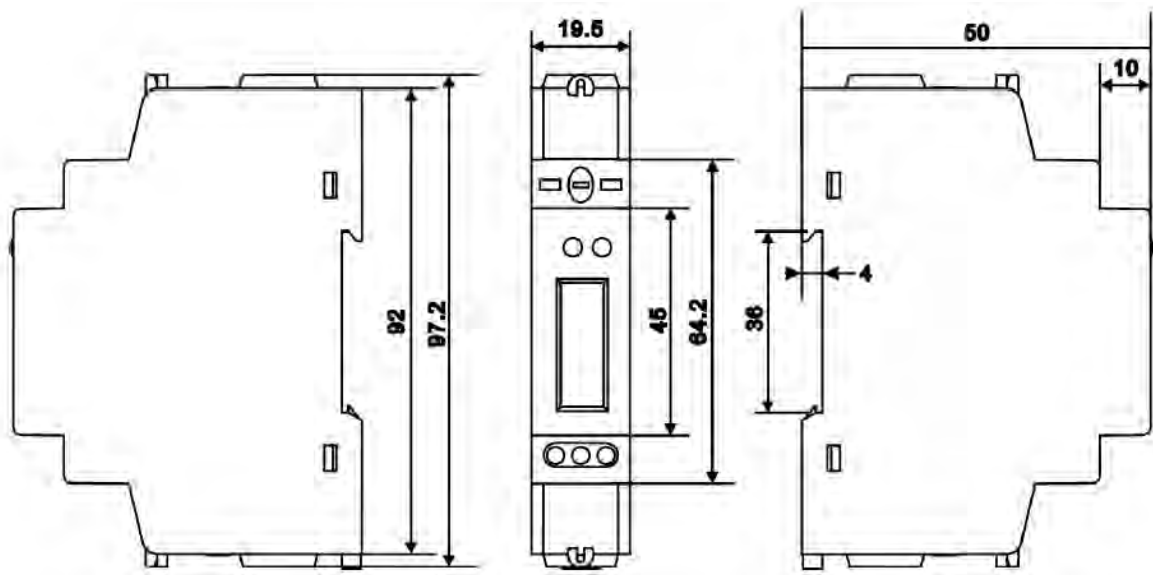
- 1 Live In      23 RS485 A
- 2 Neutral     25 RS485 B
- 3 Live Out

12345.0 kWh	Active Energy (KWh)
230.0 V	Voltage (V)
005.0 A	Current (A)
11.50 kW	Active Power (KW)
00.00 KVA <sub>r</sub>	Reactive Power (KVA <sub>r</sub> )
11.50 KVA	Apparent Power (KVA)
P 0.000	Power Factor (cos φ)

Meter Display Pages

Page will auto scroll every 5 seconds or can be manually accessed using front mounted button. Meter has a built in battery allowing display to be read with power off.

For pricing or any further information, please contact Omni Instruments Ltd.



**Please Note**

Installation of this device may only be performed by qualified personnel.

**Technical support**

In case you have any questions about our product, please contact Omni Instruments on 0845 9000 601.

**Attention**

The Meter housing is sealed. Warranty is void if the seal is broken or removed

For pricing or any further information, please contact Omni Instruments Ltd.