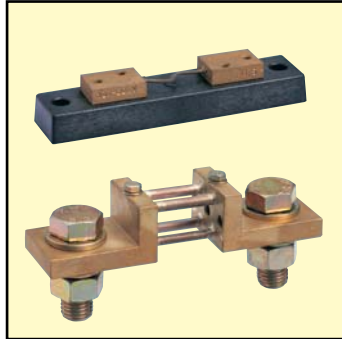


APPLICATION

To measure direct currents and deliver a proportional millivolt output signal.



**Model DER
Standard 'DIN'
Shunts**

Accuracy Class 0.5

- Overloads - 1.2 In continuous
 - 10 In for 5 seconds up to 250A
 - 5 In for 5 seconds from 251 up to 2000A
 - 2 In for 5 seconds from 2001 up to 10000A

As the shunt dissipates energy, it is subject to heating. To avoid over-heating it is necessary to clean the contacts (bar-shunt) and tighten bolts firmly.

Insulated base supplied up to 25A complete with:
 * 2 screws TCM 5x8 DIN 84-4-3 * 2 washer 5-3 DIN 433 st
 * nuts to fix the shunt to the bar.

Current range Amp	fig	Dimensions										Weight g	Dimensions										Weight g	Fixing screws bolts washer nuts		
		A	B	C	D	E	F	G	H	I	holes		A	B	C	D	E	F	G	H	I	holes		DIN 933	DIN 125-st	DIN 935-5
		60mV output											150mV output													
1-1.5 - 2.5 - 4	1	90	28	20	-	-	8	-	78	-	2x1	115	90	28	20	-	-	8	-	78	-	2x1	115	M5x12	5-3	-
6 - 10 - 15 - 20 - 25	1	90	28	20	-	-	8	-	78	-	2x1	115	90	28	20	-	-	8	-	78	-	2x1	115	M5x12	5-3	-
30-40-50-60-100-150	2	100	33	20	-	-	8	-	80	-	2x1	125	225	33	25	-	-	8	-	205	-	2x1	230	M8x16	8-4	-
200 - 250	2	145	55	30	15	-	10	10	105	20	2x1	500	270	55	30	15	-	10	10	230	30	2x1	630	M12x40	13	M12
300 - 400	2	145	55	40	20	-	10	10	105	30	2x1	750	270	55	40	20	-	10	10	230	30	2x1	950	M16x45	17	M16
500 - 600	2	145	55	40	20	-	10	10	105	30	2x1	750	270	55	40	20	-	10	10	230	30	2x1	1100	M16x45	17	M16
800 - 1000	2	165	65	60	30	-	10	10	115	30	2x1	1400	290	65	70	35	-	10	10	240	60	2x1	2500	M20x15	21	M20
1200 - 1500	2	165	65	90	21	48	10	10	115	30	2x2	1900	290	65	90	21	48	15	10	240	60	2x2	4000	M16x45	17	M16
2000 - 2500	2	165	65	120	30	60	10	10	115	30	2x2	3000	290	65	120	30	60	15	10	240	60	2x2	5400	M20x50	21	M20
3000 - 4000	3	165	65	120	30	60	15	10	115	60	2x2	4300	300	70	120	30	60	25	15	250	130	2x2	7500	M20x60	21	M20
5000 - 6000	3	175	70	154	25	52	25	15	125	130	2x3	11000	300	70	154	25	52	25	15	250	130	2x3	16000	M20x70	21	M20
8000 - 10000	3	185	75	206	25	52	30	20	135	170	2x4	20000	310	75	206	25	52	20	20	260	170	2x4	30000	M20x80	21	M20

DIMENSIONS

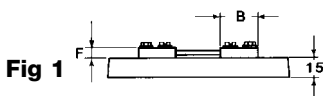


Fig 2

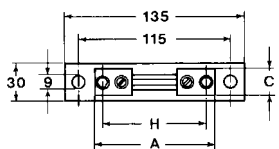
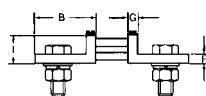
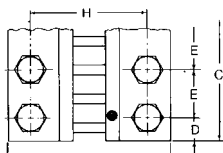
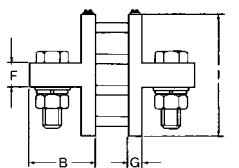


Fig 3



DC VOLTAGE DIVIDER

To reduce D.C. voltage in ranges up to 10,000V with output 0-100Vdc. Details on request

OPTIONS

75, 100 or 300mV output, H₂S ambient protection. Details on Request

Information Required With Order

- Model reference • Current range • Output signal
- Example: DC Shunt Type DER. Range 0 - 600A DC.
Output 60mV

DATA SHEET R103030