

Features

- Withstands Temperatures between -200°C up to 250°C
- 24" Flexible Probe
- Small Diameter - 2.0" (51mm)
- Submersible
- Immediate or Delay Start
- Up to 1 Second Reading Rate

Benefits

- Validate a Wide Range of Temperature Processes Using One Data Logger
- HiTemp140-PT can be used With or Without Thermal Shield
- Durable Thermal Shield Protects Probe and Allows for a Fast Response Time

Applications

- Peanut Roasting
- Food Processing
- Meat Processing
- Autoclave Validation
- Conveyor Ovens
- Dishwasher Testing
- Incubator Validation

The HiTemp140-PT-TSK is a kit that includes a HiTemp140-PT data logger housed in a thermal shield. The combined features of the +/-0.1°C accuracy of the HiTemp140-PT and the properties of the durable thermal shield allow the device to be used for a wide range of validation applications. The built in 24" RTD probe can be bent or spiraled in any direction, making it easy to log temperatures in hard to reach places. This rugged system can be placed in and withstand temperatures from -200°C to 250°C, making it ideal for use in autoclave validation, monitoring food processing and dishwasher testing.

Using the MadgeTech software, the data logger is fast and easy to setup. Remove the thermal shield and place the HiTemp140-PT into the IFC400 or IFC406 docking station (*sold separately*). Using the software, an immediate or delay start can be chosen, as well as the reading rate. Start the data logger and place the thermal shield around the HiTemp140-PT. The device is ready to be deployed.

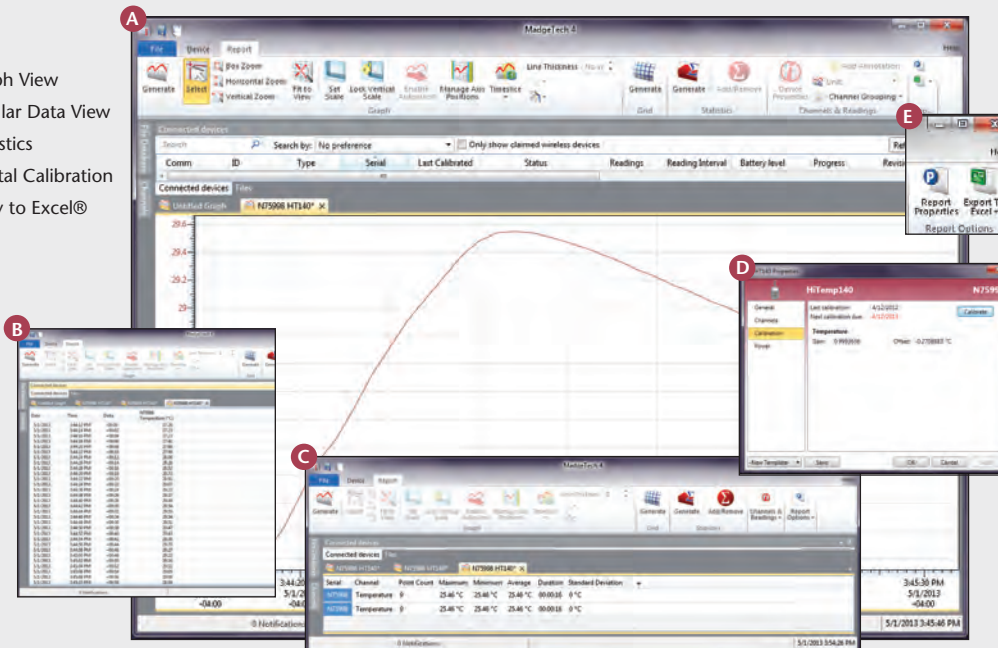
The HiTemp140-PT-TSK can be completely submerged and is built for applications that require extreme temperature monitoring.



MADGETECH DATA LOGGER SOFTWARE

Key

- A** Graph View
- B** Tabular Data View
- C** Statistics
- D** Digital Calibration
- E** Copy to Excel®



Software Features:

- Multiple graph overlay
- Statistics
- Digital calibration
- Zoom in/ zoom out
- Lethality equations (F0, PU)
- Mean Kinetic Temperature
- Full time zone support
- Data annotation
- Min./Max./Average lines
- Data table view
- Automatic report generation
- Summary view
- Multilingual

For pricing or any further information, please contact Omni Instruments Ltd.

HITEMP140-PT SPECIFICATIONS*

*SPECIFICATIONS ARE SUBJECT TO CHANGE WITHOUT NOTICE. SPECIFIC WARRANTY REMEDY LIMITATIONS APPLY.

Temperature Sensor:	100Ω Platinum RTD
Probe Measurement Range:	-200°C to +260°C (-328°F to +500°F)
Temperature Resolution:	0.01°C (0.02°F)
Calibrated Accuracy:	±0.1°C/±0.18°F (20°C to +140°C/68°F to +284°F) ±0.3°C/±0.54°F (-20°C to +19.99°C/-4°F to +67.98°F) ±0.4°C/±0.72°F (-40°C to -20.01°C/-40°F to -4.02°F)
Start Modes:	<ul style="list-style-type: none"> Software programmable immediate start Delay start up to 18 months in advance
Stop Modes:	Manual through software Timed (specific date and time)
Real Time Recording:	May be used with PC to monitor and record data in real time
Password Protection:	An optional password may be programmed into the device to restrict access to configuration options. Data may be read out without the password.
Memory:	32,700 readings
Wrap Around:	Yes
Reading Rate:	One second up to once every 24 hours
Battery Type:	3.6V high-temperature lithium battery included; user replaceable

Battery Life:	1 year typical (1 minute reading rate at 25°C/77°F)
Calibration:	Digital calibration through software
Calibration Date:	Automatically recorded within device
Data Format:	Date and time stamped °C, °F, K, °R
Time Accuracy:	±1 minute/month at 20°C to 30°C (68°F to 86°F) (Stand alone mode)
Computer Interface:	IFC400 OR IFC406 USB docking station required; 125,000 baud
Software:	XP SP3/Vista/Windows 7/Windows 8 (<i>MadgeTech 4 Only</i>)
Operating Environment:	-40°C to +140°C (-40°F to +284°F), 0%RH to 100%RH
Dimensions (Body):	1.9" x 0.97" dia. (48mm x 24.6mm dia.)
Dimensions (PT-1 Probe):	Probe tip: 1.7" x 0.125" dia. (42mm x 3.2mm dia.) Flexible portion: 22" x 0.062" dia. (559 mm x 1.6mm dia.)
Dimensions (PT-5 Probe):	Probe tip: 4.8" x 0.125" dia. with 1" x 0.188 dia. handle (121mm x 3.2mm dia. with 25mm x 4.8mm dia. handle) Flexible portion: 22" x 0.062" dia. (559 mm x 1.6mm dia.)
Weight:	4.2 oz (120g)
Material:	316 Stainless Steel
Approvals:	CE

HITEMP140-PT-TSK SPECIFICATIONS*

Operating Environment:	Ambient Temperature	Exposure Time in Air (150°C/302°F)	Exposure Time in Liquid (150°C/302°F)	
-200°C to +250°C (-328 to +482°F) (Time limited) 0 to 100% RH	-200°C (-328°F)	18 minutes	N/A	
Dimensions: Flush Top: 2.75" x 2.0" dia. (69.85mm x 51 mm dia.) Vented Top: 4.3" x 2.0" dia. (109.2mm x 50.8mm dia.)	-180°C (-292°F)	19 minutes	N/A	
	-160°C (-256°F)	21 minutes	N/A	
	-140°C (-220°F)	24 minutes	N/A	
	-120°C (-184°F)	27 minutes	N/A	
	-100°C (-148°F)	32 minutes	N/A	
	-80°C (-112°F)	40 minutes	N/A	
	-60°C (-76°F)	55 minutes	25 minutes	
	-40°C to +140°C (-40°F to +284°F)	Indefinitely	Indefinitely	
	Weight: Flush: 8.2 oz. (232.5g) (not including data logger) Vented: 9.9 oz. (280.7g) (not including data logger)	150°C (302°F)	88 minutes	40 minutes
		160°C (320°F)	75 minutes	34 minutes
170°C (338°F)		63 minutes	29 minutes	
180°C (356°F)		55 minutes	26 minutes	
190°C (374°F)		50 minutes	23 minutes	
200°C (392°F)		45 minutes	21 minutes	
210°C (410°F)		42 minutes	19 minutes	
220°C (428°F)		39 minutes	18 minutes	
Material: Enclosure: PTFE	230°C (446°F)	36 minutes	17 minutes	
	240°C (464°F)	34 minutes	16 minutes	
	250°C (482°F)	32 minutes	15 minutes	

BATTERY WARNING: WARNING: FIRE, EXPLOSION, AND SEVERE BURN HAZARD. DO NOT SHORT CIRCUIT, CHARGE, FORCE OVER DISCHARGE, CRUSH, PENETRATE, OR INCINERATE. BATTERY MAY LEAK OR EXPLODE IF HEATED ABOVE 150°C (302°F).

ORDERING INFORMATION

MODEL	DESCRIPTION
HITEMP140-PT-1-TSK	HiTemp140-PT-1 data logger and vented thermal shield
HITEMP140-PT-1-TSK-FL	HiTemp140-PT-1 data logger and flush thermal shield
HITEMP140-PT-5-TSK	HiTemp140-PT-5 data logger and vented thermal shield
HITEMP140-PT-5-TSK-FL	HiTemp140-PT-5 data logger and flush thermal shield
IFC400	Docking station with USB cable, software and manual
IFC406	6 Port, Multiplexer docking station with USB cable, software and manual
ER1425S-HT	Replacement battery for the HiTemp140-PT
*NIST	NIST Calibration Certificate

REV 9 2013.10.21

For pricing or any further information, please contact Omni Instruments Ltd.



UK / Europe Office
Tel: +44 845 9000 601
Fax: +44 845 9000 602
info@omni.uk.com
www.omniinstruments.co.uk

Australian Office
Tel: +61 282 442 363
Fax: +61 294 751 278
info@omniinstruments.com.au
www.omniinstruments.com.au

USA / Canada Office
Tel: +1 866 849 3441
Fax: +1 866 625 8055
info@omniinstruments.net
www.omniinstruments.net